

City of Lafayette  
Lafayette Library and Learning Center Project Bulletin

February 8, 2008

**Construction Activities:** Rain continued to slow construction as expected during the winter. Work has moved up to the Second Level with the laying of rebar, conduit, and floor decking. Walls on the Second Level are beginning to be formed. Work began on the main Plaza Staircase. Site development work around the foundation of the building and parking lot continues.



#1 – Gravel is unloaded in the parking lot in front of the shoring wall below Boswells.



#2 – Gravel is lifted over the wall.



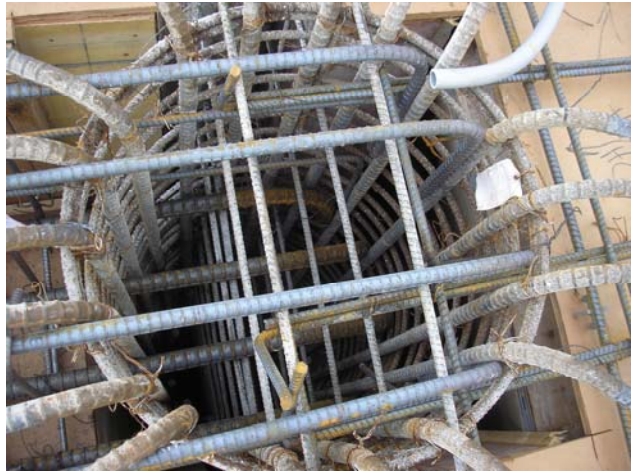
#3 – Gravel is poured into the space between the shoring wall and Boswell's retaining wall.



#4 – Gravel is spread by hand.



Rebar and conduit on the Second Level



Looking down into a column's rebar cage



Looking west at decking on the Second Level over the rebar and conduit



Preparing the forms for the Plaza Staircase



Removing forms in the First Level parking garage



Looking east at Plaza Staircase on the left, wall for Lobby elevator at center, Teen Area on the right