

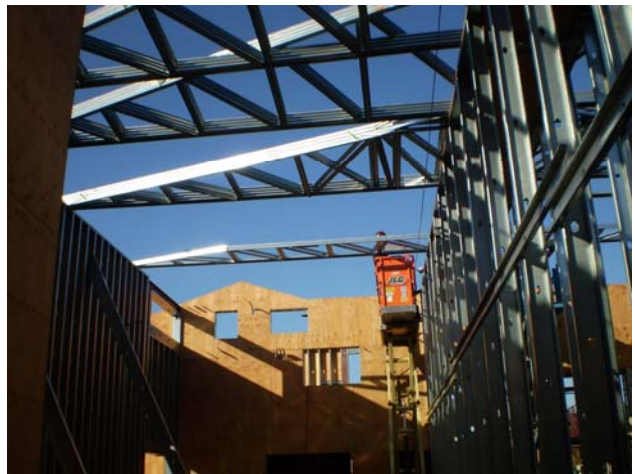
City of Lafayette
Lafayette Library and Learning Center Project Bulletin

October 31, 2008

Construction Activities: Work continues on the walls in the Library and Community Hall buildings. The roof trusses for the Community Hall are in place. Mechanical and safety systems are being installed. PG&E connected its service from Golden Gate Way. However, the primary focus has been and will continue be getting the buildings and site ready for the winter rains.



Framing of wall around the Community Hall platform and platform storage space



Community Hall roof trusses



Looking west through the Lobby & Community Art Gallery of the Community Hall



Duct work in the Staff Wing



Ceiling fire sprinkler connections



Installation of PG&E service connection

Then and Now:



October 26, 2007



October 28, 2008

Public Art: The first phase of the two public artworks installations is about to begin. The connections for Brian Goggin's flying pages will be inserted into the exterior walls prior to weatherproofing the walls. The wall of the Children's Activity Deck will be drilled out for Kana Tanaka's "portholes" prior to weatherproofing.